

WAHL CLIPPER CORPORATION
World Headquarters
P.O. Box 578, Sterling, IL 61081

Wahl (UK) Ltd.
Herne Bay Trade Park
Sea Street Herne Bay, Kent
CT6 8JZ England

Wahl Australia PTY LTD
3 Durbell St (PO Box 456)
Acacia Ridge Qld 4110 Australia
07 3272 4289
contactus@unityagencies.com.au

Wahl NZ Limited
4 Cornish St
Korokoro, Lower Hutt 5045
New Zealand
04 5898817
unityagenciesnz@xtra.co.nz

Wahl India Grooming Products
Pvt Ltd
201, 2nd Floor X Cube, Opp. Fun
Republic
New Link Road, Andheri (West)
Mumbai – 400 053 Maharashtra,
India

Wahl Clipper (PTY) Ltd.
Suite L9 & L10
Hingham Field Oce Park
79 Boeing Road East
Bedfordview, Gauteng 2007
South Africa

Wahl International Consumer Group
Engelenburgstraat 36
7391 AM Twello, Nederland

Wahl International Consumer
Group B.V
(Dubai Branch)
Dubai Silicon Oasis
P.O. Box – 341023
Dubai
United Arab Emirates

WAHL Russia
(ООО «Уолл Рус») **ЕАС**
Российская Федерация
129164, Москва,
Ракетный бульвар, 16
info@wahlrus.ru

Wahl Argentina
Av. Alvarez Jonte 5655
Buenos Aires (C1407GPK)
Argentina

Wahl Clipper Brasil
Rodovia Geraldo Scavone, 2300
UC 45, Pedregulho,
Jacarei - SP. CEP: 12305490

Wahl GmbH
Roggenbachweg 9
78089 Unterkirrnach,
Germany

WAHL Spain
Fernando Giner de los Rios 12
46910 Sedavi
Valencia, Spain

© 2017 Printed in Hungary
Wahl® is a registered trademark
of Wahl Clipper Corporation

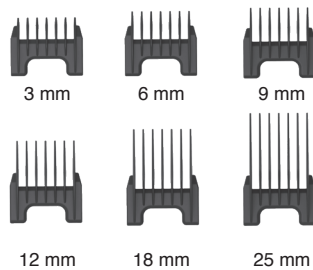
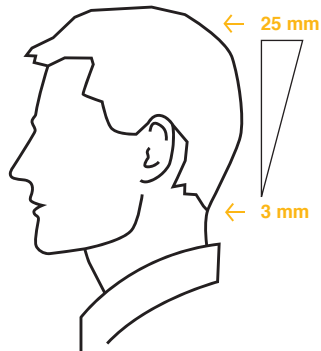
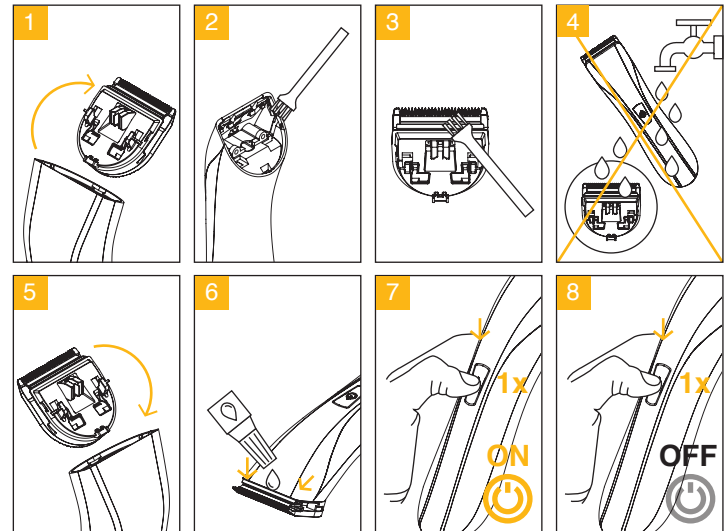
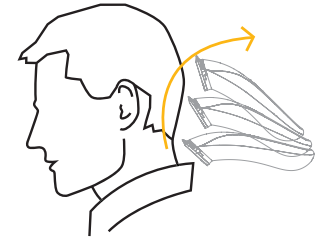
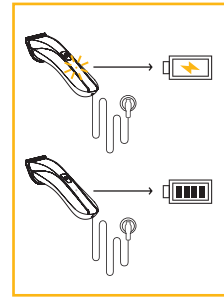
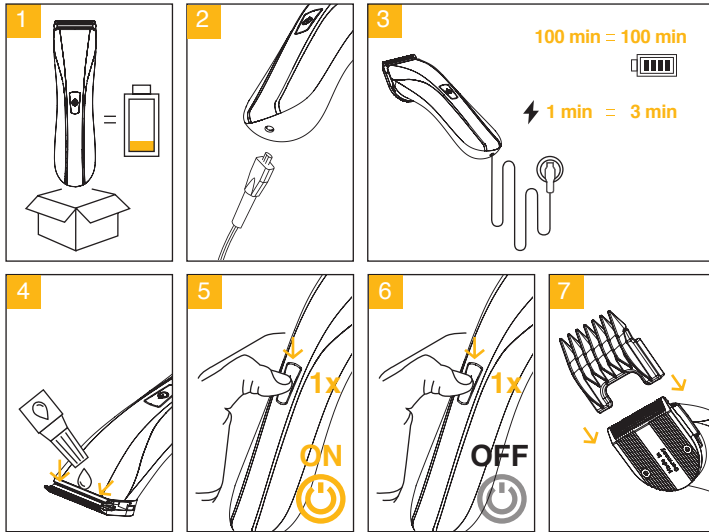
www.wahl-consumer.com

1910 WAHL Lithium Pro Clipper

MODEL/TYPE 1910



Part No.1910.1011



1910 WAHL Lithium Pro Clipper

1910 WAHL Lithium Pro Clipper

